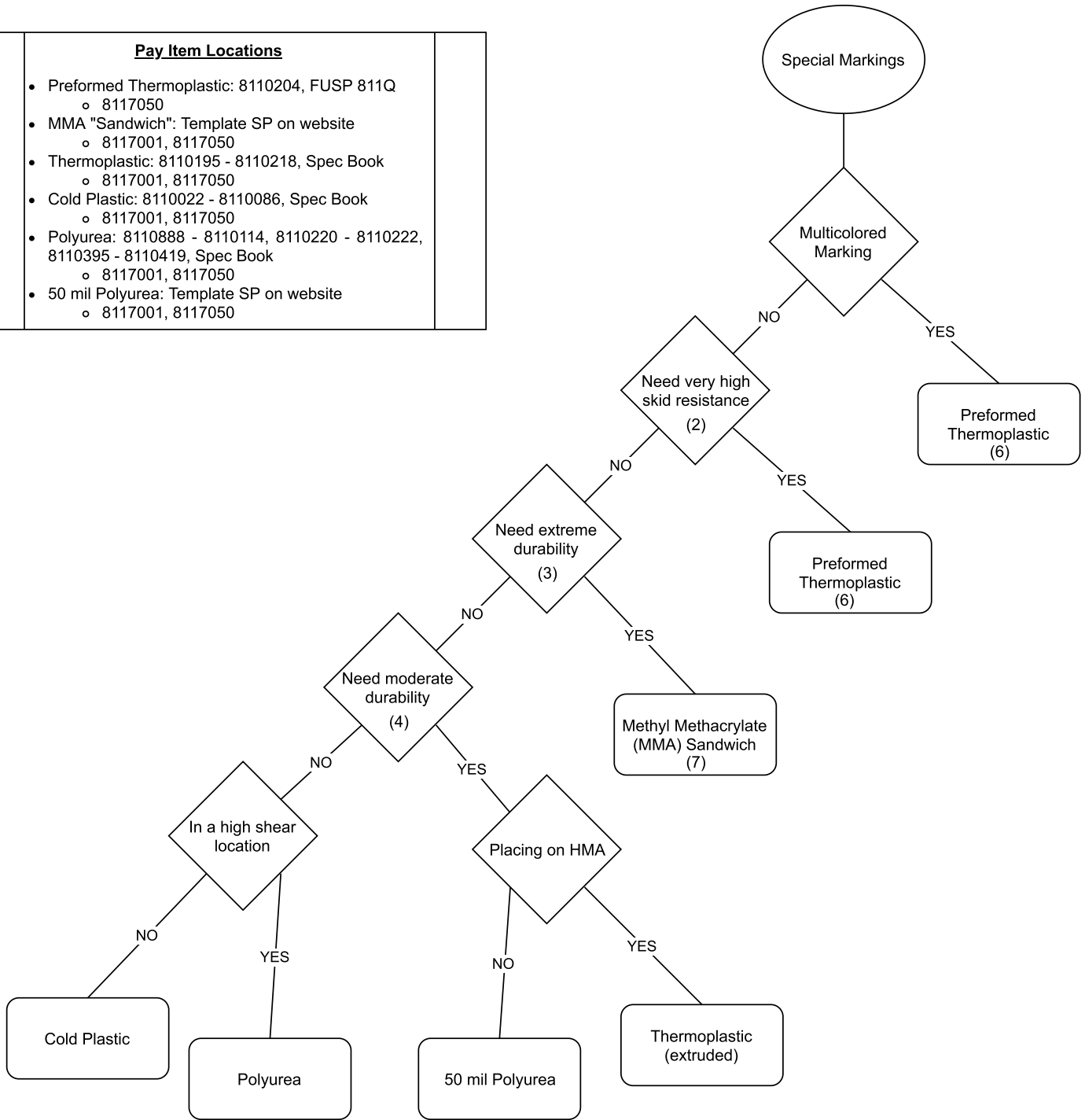


Pay Item Locations	
•	Preformed Thermoplastic: 8110204, FUSP 811Q o 8117050
•	MMA "Sandwich": Template SP on website o 8117001, 8117050
•	Thermoplastic: 8110195 - 8110218, Spec Book o 8117001, 8117050
•	Cold Plastic: 8110022 - 8110086, Spec Book o 8117001, 8117050
•	Polyurea: 8110888 - 8110114, 8110220 - 8110222, 8110395 - 8110419, Spec Book o 8117001, 8117050
•	50 mil Polyurea: Template SP on website o 8117001, 8117050



1. Recessing is at the discretion of the Engineer. It can further improve durability, but use caution with markings often traversed by pedestrians and bicycles as the recess can trap water/debris/ice.
2. Sensitive areas for pedestrians, bicycles, and/or motorcycles. Perhaps crosswalks near hospitals or multiple large pavement markings in a row.
3. Areas where nothing else is working. Perhaps the circulatory roadway in some roundabouts or markings on older polished concrete.
4. When more durability is needed than the basic cold plastic or polyurea can provide, but it is not critical enough to require MMA.
5. High turning and/or truck volume locations. Typically affects crosswalks and stop bars.
6. Also very durable and shear-resistant. Due to higher cost it is only recommended for multicolor markings (accessible and route symbols) and where skid resistance is critical for other road users (pedestrians, bicycles, motorcycles, etc.)
7. Also very shear-resistant. Decent skid resistance, but can be made more skid resistant with specialized bead packages.